

Cod. 33GC

**ESPULSORI TESTA CILINDRICA TEMPRATI
LAMELLARI GAMBO CORTO PER STAMPI**

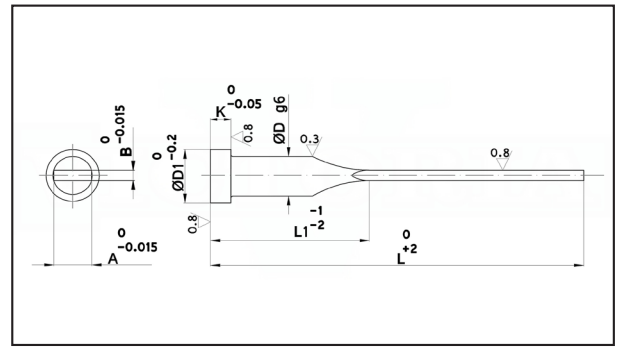
Materiale: acciaio 102Cr6 UNI EN ISO 4597 n. 1.2067.

Durezza gambo: 58 ÷ 60 HRC.

Durezza testa: 40 ÷ 50 HRC.

Esecuzione: rettifica.

Esempio di ordinazione: B * A * L



B	A	D	D1	L L1 K	125 32	160 32	200 50	250 60	315 80	400 100	
0.6	1.8	2	4	2	a rich.						
0.6	2.8	3	6	3	a rich.	a rich.					
0.6	3.8	4.2	8	3	a rich.	a rich.					
0.8	2.8	3	6	3	a rich.	a rich.					
0.8	3.8	4.2	8	3	a rich.	a rich.	a rich.	a rich.	a rich.		
0.8	5.5	6	12	5	a rich.	a rich.	a rich.	a rich.			
1	2.8	3	6	3	a rich.	a rich.	a rich.				
1	3.5	4	8	3	a rich.	a rich.					
1	3.8	4.2	8	3	a rich.	a rich.	a rich.	a rich.			
1	4.5	5	10	3	a rich.	a rich.	a rich.	a rich.			
1	5.5	6	12	5	a rich.	a rich.	a rich.	a rich.	a rich.		
1.2	3.8	4.2	8	3	a rich.	a rich.	a rich.	a rich.			
1.2	4.5	5	10	3	a rich.	a rich.	a rich.	a rich.	a rich.		
1.2	5.5	6	12	5	a rich.	a rich.	a rich.	a rich.	a rich.		
1.2	7.5	8	14	5	a rich.	a rich.	a rich.	a rich.	a rich.		
1.5	4.5	5	10	3	a rich.	a rich.	a rich.	a rich.			
1.5	5.5	6	12	5	a rich.	a rich.	a rich.	a rich.	a rich.		
1.5	7.5	8	14	5	a rich.	a rich.	a rich.	a rich.	a rich.		
1.5	9.5	10	16	5		a rich.	a rich.	a rich.	a rich.	a rich.	
2	5.5	6	12	5	a rich.	a rich.	a rich.	a rich.	a rich.		
2	7.5	8	14	5		a rich.	a rich.	a rich.	a rich.		
2	9.5	10	16	5			a rich.	a rich.	a rich.	a rich.	
2	11.5	12	18	7			a rich.	a rich.	a rich.		
2.5	11.5	12	18	7			a rich.	a rich.	a rich.		

5