

Cod. 68

ESPULSORI A CANNOCCHIALE TEMPRATI ISO 8405 PER STAMPI

Materiale: acciaio UNI 90MnVCr8 n. 1.2842 o UNI 100W4KU n. 1.2516.

Trattamento termico: tempra e rinvenimento.

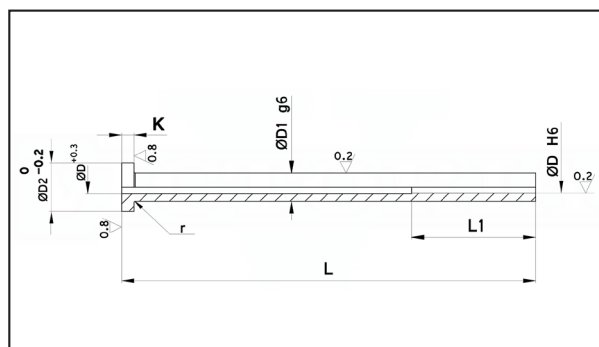
Durezza: gambo 58 ÷ 62 HRC.

Durezza: testa 40 ÷ 50 HRC.

Esecuzione: Rettifica e lappatura.

Esempio di ordinazione: D * L

Note: Per L=400 L1=100



D	D1	D2	K	L L1	75	100	125	150	175	200	225	250	275	300	400
1.5	3	6	3	30	a rich.	a rich.	a rich.	a rich.	a rich.	a rich.					
1.6	3	6	3	30	a rich.	a rich.	a rich.	a rich.	a rich.	a rich.					
2	4	8	3	30	23,16	26,92	31,00	35,40	a rich.	a rich.	a rich.	a rich.			
2.2	4	8	3	30	23,16	26,92	32,40	41,12	a rich.	a rich.	a rich.	a rich.			
2.5	5	10	3	30	23,16	26,92	32,40	41,12	a rich.	a rich.	a rich.	a rich.	a rich.	a rich.	
2.7	5	10	3	30	a rich.	a rich.	a rich.	a rich.	a rich.	a rich.	a rich.	a rich.			
3	5	10	3	30	26,40	32,08	41,20	48,84	54,96	62,60	a rich.	a rich.	a rich.	a rich.	
3.2	5	10	3	30	27,32	33,56	42,00	49,64	58,80	67,16	a rich.	a rich.	a rich.	a rich.	
3.5	6	12	5	30	29,64	34,24	41,56	50,36	59,24	66,20	a rich.	a rich.	a rich.	a rich.	
4	6	12	5	45	15,52	21,24	25,84	31,92	36,20	40,64	a rich.	44,64	a rich.	a rich.	a rich.
4.2	8	14	5	45	15,52	21,24	25,84	31,92	36,20	40,64	a rich.	44,64	a rich.	a rich.	a rich.
4.5	8	14	5	45	15,52	21,24	25,84	31,92	36,20	40,64	a rich.	44,64	a rich.	a rich.	a rich.
5	8	14	5	45	15,80	21,28	25,24	31,36	35,80	40,44	a rich.	43,80	a rich.	a rich.	a rich.
5.2	8	14	5	45	15,80	21,28	25,24	31,36	35,80	40,44	a rich.	43,80	a rich.	a rich.	a rich.
6	10	16	5	45	18,00	22,04	26,76	32,28	36,40	41,36	a rich.	45,04	a rich.	a rich.	a rich.
6.2	10	16	5	45	18,00	22,04	26,76	32,28	36,40	41,36	a rich.	45,04	a rich.	a rich.	a rich.
8	12	20	7	45	18,40	22,52	28,16	34,40	37,32	42,24	a rich.	46,08	a rich.	a rich.	a rich.
8.2	12	20	7	45	18,40	22,52	28,16	34,40	37,32	42,24	a rich.	46,08	a rich.	a rich.	a rich.
9	12	20	7	45		a rich.	a rich.	a rich.	a rich.	a rich.	a rich.	a rich.	a rich.	a rich.	a rich.
10	14	22	7	45	27,76	28,60	35,36	40,60	48,28	53,44	a rich.	66,32	a rich.	a rich.	a rich.
10.2	14	22	7	45	a rich.	a rich.	a rich.	a rich.	a rich.	a rich.	a rich.	a rich.			
10.5	14	22	7	45	a rich.	a rich.	a rich.	a rich.	a rich.	a rich.	a rich.	a rich.	a rich.	a rich.	a rich.
11	14	22	7	45		a rich.	a rich.	a rich.	a rich.	a rich.	a rich.	a rich.	a rich.	a rich.	a rich.
12	16	22	7	45	35,56	36,44	45,68	52,44	62,48	69,20	a rich.	86,00	a rich.	a rich.	a rich.
12.5	16	22	7	45	a rich.	a rich.	a rich.	a rich.	a rich.	a rich.	a rich.	a rich.	a rich.	a rich.	a rich.