

Cod. 69

ESPULSORI A CANNOCCHIALE NITRURATI ISO 8405 PER STAMPI

Materiale: acciaio UNI X40CrMoV511 n. 1.2344.

Resistenza a trazione Rm: 1300 ÷ 1450 N/mm².

Resistenza a rinvenimento: 550 C°.

Trattamento termico: nitrurazione.

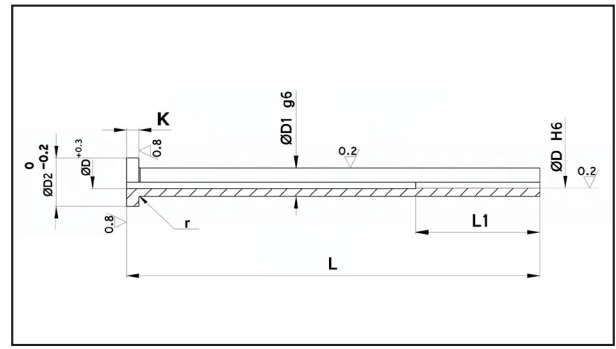
Durezza gambo: 950 ÷ 1100 Vickers, 68 ÷ 70 HRC.

Durezza testa: 40 ÷ 50 HRC.

Esecuzione: rettifica e lappatura.

Esempio di ordinazione: D * L

Note: Per L=400 L1=100



D	D1	D2	K	L L1	75	100	125	150	175	200	225	250	275	300	400
1.5	3	6	3	30	a rich.	a rich.	a rich.	a rich.	a rich.						
1.6	3	6	3	30	a rich.	a rich.	a rich.	a rich.	a rich.						
2	4	8	3	30	21,48	28,68	34,00	46,04	a rich.	a rich.	a rich.				
2.2	4	8	3	30	21,48	28,68	34,00	46,04	a rich.	a rich.	a rich.				
2.5	5	10	3	30	21,48	28,68	34,00	46,04	68,00	80,20	a rich.				
2.7	5	10	3	30	a rich.	a rich.	a rich.	a rich.	a rich.	a rich.	a rich.				
3	5	10	3	30	18,12	24,24	28,24	40,44	46,04	51,00	61,04	73,24			
3.2	5	10	3	30	18,12	24,24	28,24	40,44	46,04	51,00	66,24	76,72			
3.5	6	12	5	30	18,12	24,24	28,24	35,84	39,24	43,96	68,00	80,20	a rich.	a rich.	
4	6	12	5	45	18,12	24,24	28,24	35,84	39,24	43,96	48,16	52,40	59,28	64,52	
4.2	8	14	5	45	17,16	22,56	27,00	30,76	37,56	42,64	47,08	50,48	64,52	80,20	
4.5	8	14	5	45	17,16	22,56	27,00	30,76	37,56	42,64	47,08	50,48	64,52	80,20	a rich.
5	8	14	5	45	17,16	22,56	27,00	30,76	37,56	42,64	47,08	50,48	64,52	76,72	a rich.
5.2	8	14	5	45	17,16	22,56	27,00	30,76	37,56	42,64	47,08	50,48	64,52	80,20	a rich.
6	10	16	5	45	17,16	22,56	27,00	30,76	37,56	42,64	47,08	50,48	64,52	76,72	a rich.
6.2	10	16	5	45	17,16	22,56	27,00	30,76	37,56	42,64	47,08	50,48	64,52	80,20	a rich.
8	12	20	7	45	17,16	22,56	27,00	30,76	37,56	42,64	47,08	50,48	64,52	76,72	a rich.
8.2	12	20	7	45	17,16	22,56	27,00	30,76	37,56	42,64	47,08	50,48	64,52	76,72	a rich.
9	12	20	7	45		a rich.	a rich.	a rich.	a rich.	a rich.	a rich.	a rich.	a rich.	a rich.	a rich.
10	14	22	7	45	25,04	29,36	35,12	40,04	48,88	55,44	°60,12	65,64	°74,08	°83,64	a rich.
10.2	14	22	7	45	a rich.	a rich.	a rich.	a rich.	a rich.	a rich.	a rich.	a rich.			
10.5	14	22	7	45	a rich.	a rich.	a rich.	a rich.	a rich.	a rich.	a rich.	a rich.	a rich.	a rich.	a rich.
12	16	22	7	45	33,40	34,68	42,20	47,88	57,72	66,92	76,12	80,36	95,64	104,60	a rich.
12.5	16	22	7	45	a rich.	a rich.	a rich.	a rich.	a rich.	a rich.	a rich.	a rich.	a rich.	a rich.	